



GAT MONTHLY MEMBERSHIP PROGRESS REPORT

Results as of: 1/31/2023

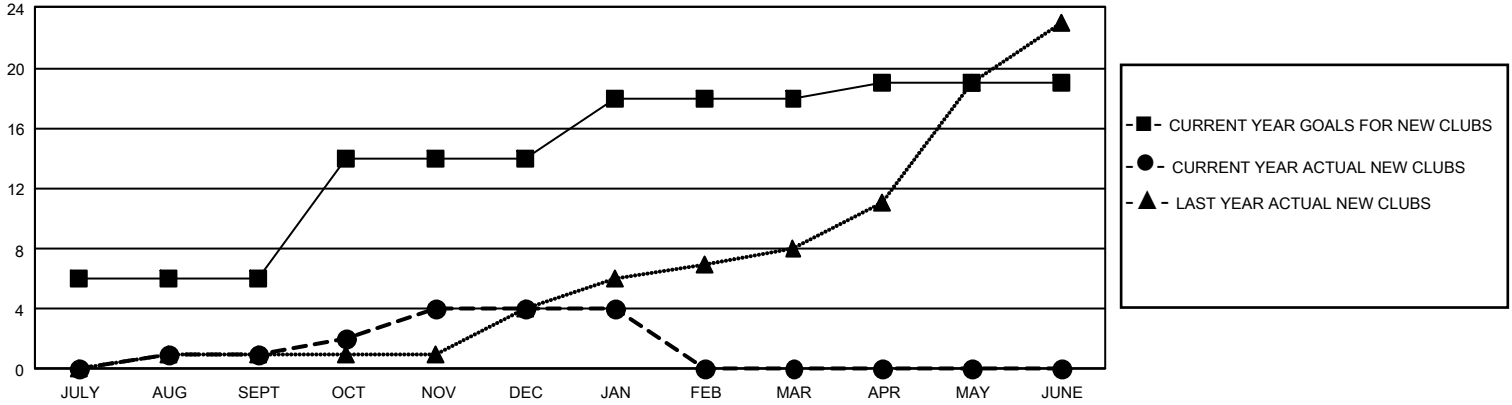
GMT Constitutional Area 3, Group A

REPORT DOES NOT INCLUDE CLUBS IN UNDISTRICTED AREAS.

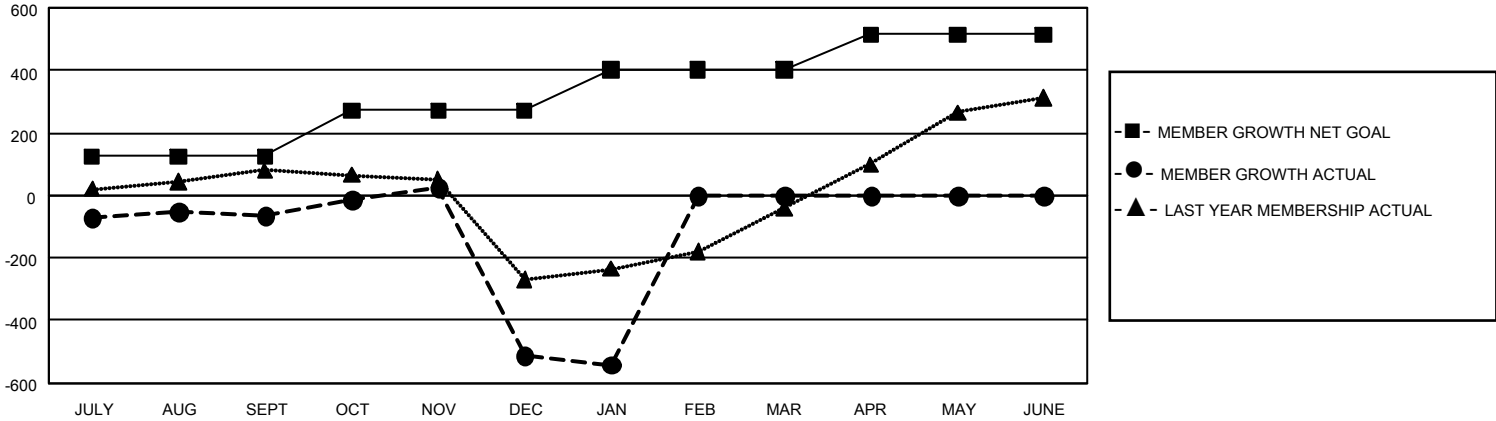
Clubs			
RESULTS FOR 2022-2023			
QUARTER	NEW CLUB GOAL	NEW CLUBS	DROPPED CLUBS
JULY/AUG/SEPT	18	1	1
OCT/NOV/DEC	24	3	10
JAN/FEB/MAR	12	0	1
APR/MAY/JUNE	3	0	0

Members			
RESULTS FOR 2022-2023			
QUARTER	MEMBER GROWTH NET GOAL	MEMBER GROWTH ACTUAL	DROPPED MEMBERS ACTUAL (including transfers)
JULY/AUG/SEPT	124	302	341
OCT/NOV/DEC	147	304	744
JAN/FEB/MAR	132	142	155
APR/MAY/JUNE	112	0	0

GOALS AND ACTUAL NEW CLUBS CUMULATIVE



GOALS AND ACTUAL MEMBERS CUMULATIVE



DROPPED CLUBS: 12	169 CLUBS OF 358 ADDED 1 OR MORE NEW MEMBERS	<u>GENDER DISTRIBUTION</u>	
		MALE 4,581 (45.73%) FEMALE 5,433 (54.24%) NON BINARY 0 (0.00%) PREFER NOT TO ANSWER 3 (0.03%)	
<u>DROPPED MEMBERS</u>		CLICK HERE FOR CUMULATIVE MEMBERSHIP DATA	TOTAL FAMILY UNIT MEMBERS 3,021
DECEASED 34 CLUB CANCELLED 375 OTHER 831 TOTAL 1,240			FAMILY MEMBERS PAYING HALF DUES 1,698